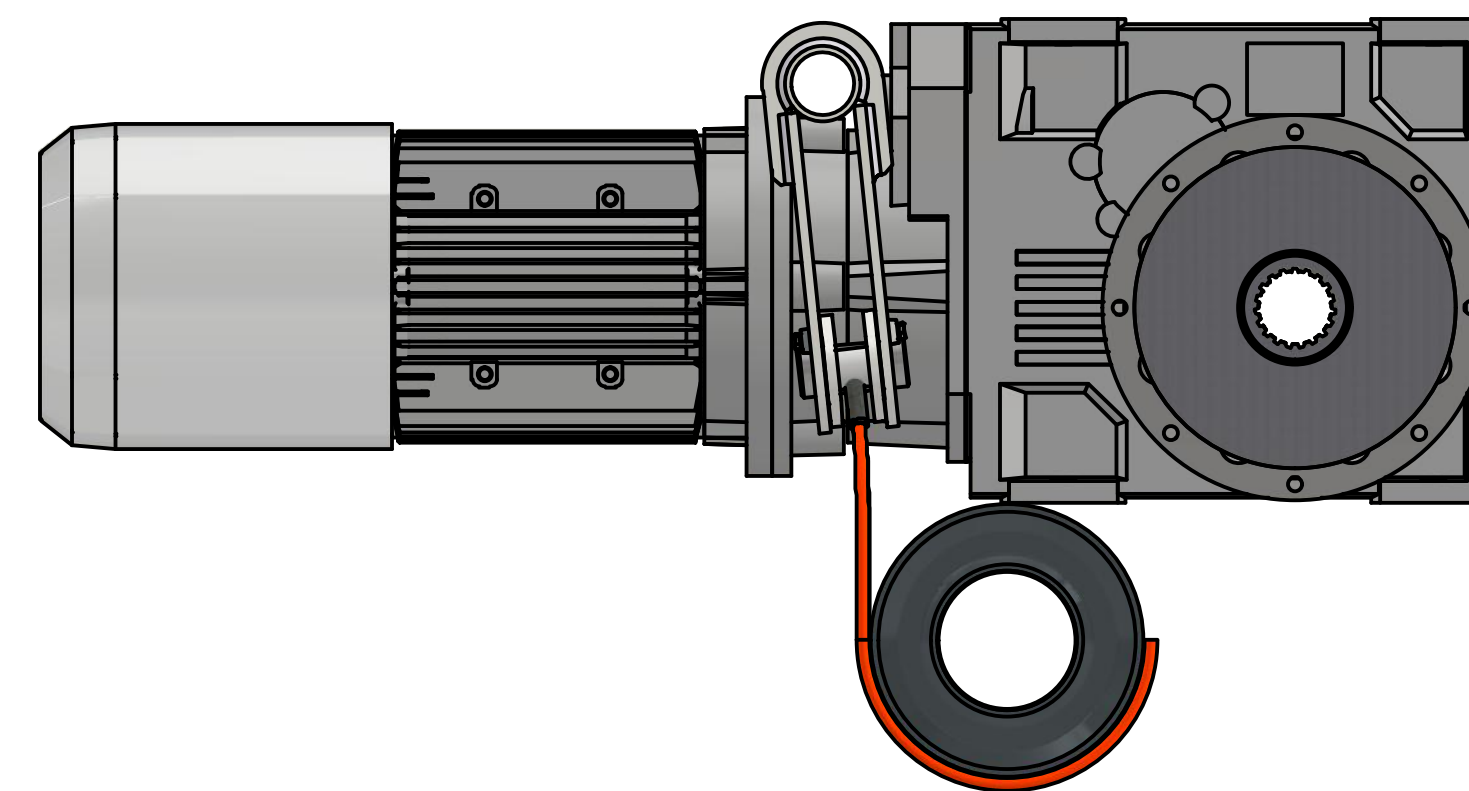
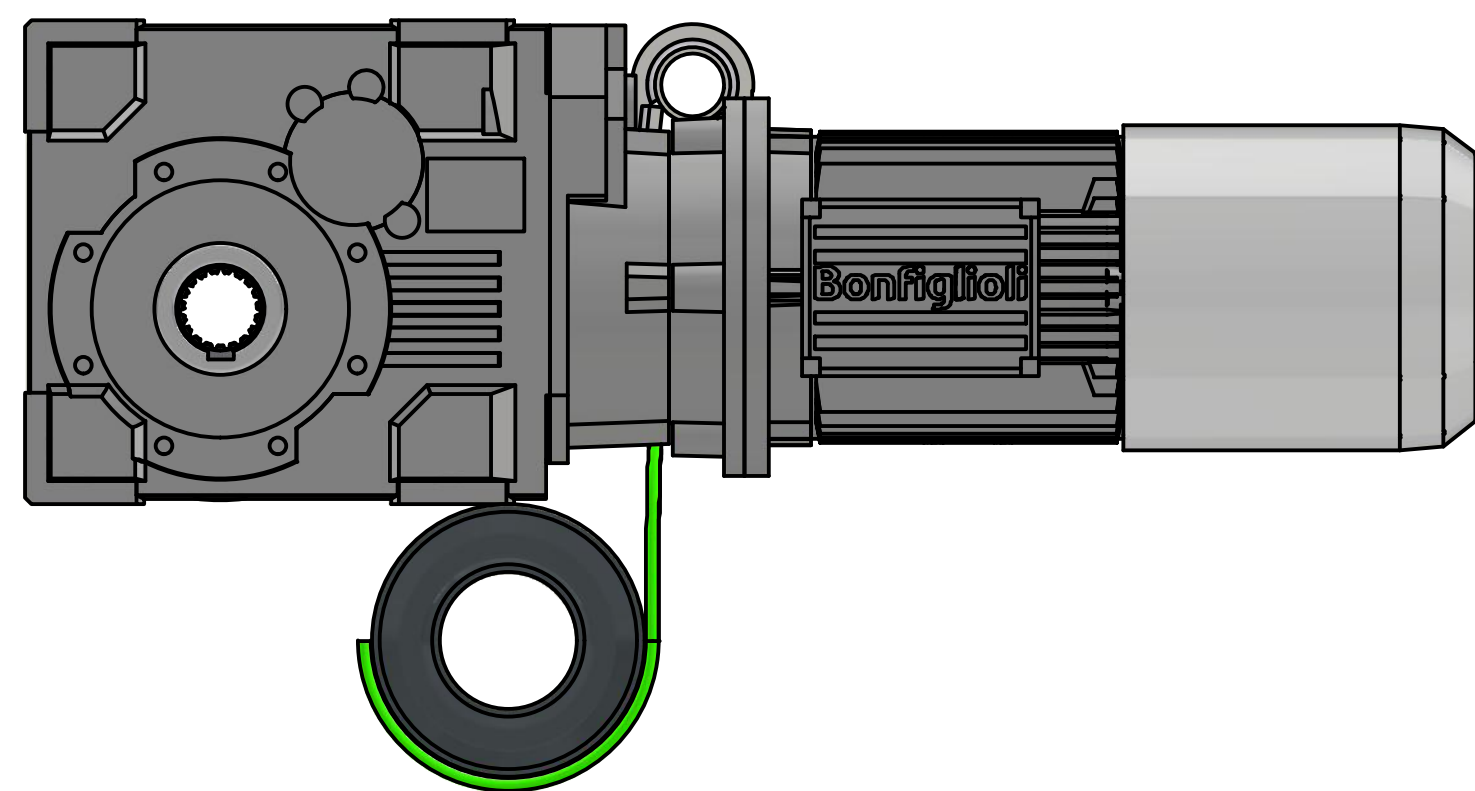
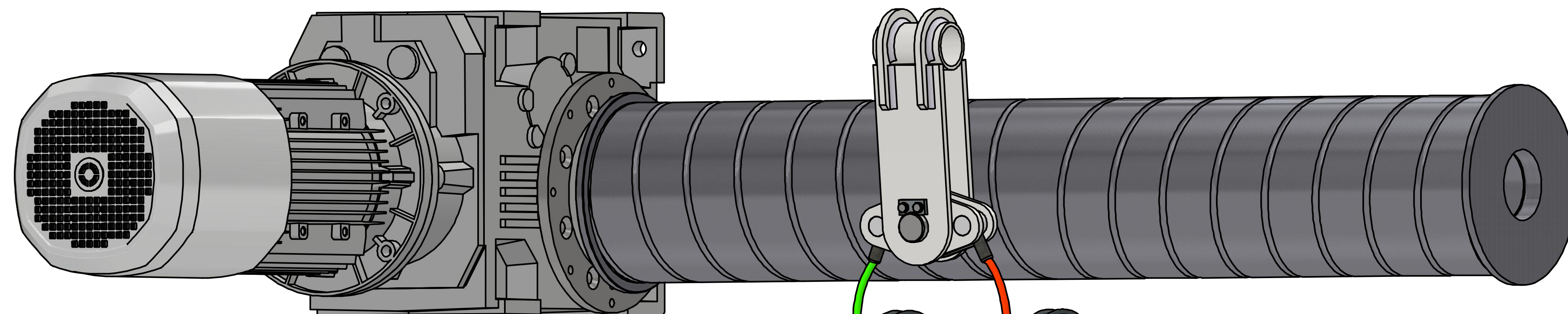


TO REEVE HOIST WITHOUT CAUSING TOO MUCH TENSION IN THE ROPE, START BY ROPING THE EQUALIZER WELDMENT AS SHOWN. ADD 2 COUNTER-TWISTS TO THE ROPE EACH TIME IT WRAPS AROUND A SHEAVE. NOTE WHETHER YOU HAVE LEFT LAY OR RIGHT LAY WIRE ROPE. THE COUNTER-TWISTS WILL BE IN THE OPPOSITE DIRECTION OF THE LAY (LOOSEN THE ROPE COIL AROUND THE CORE).

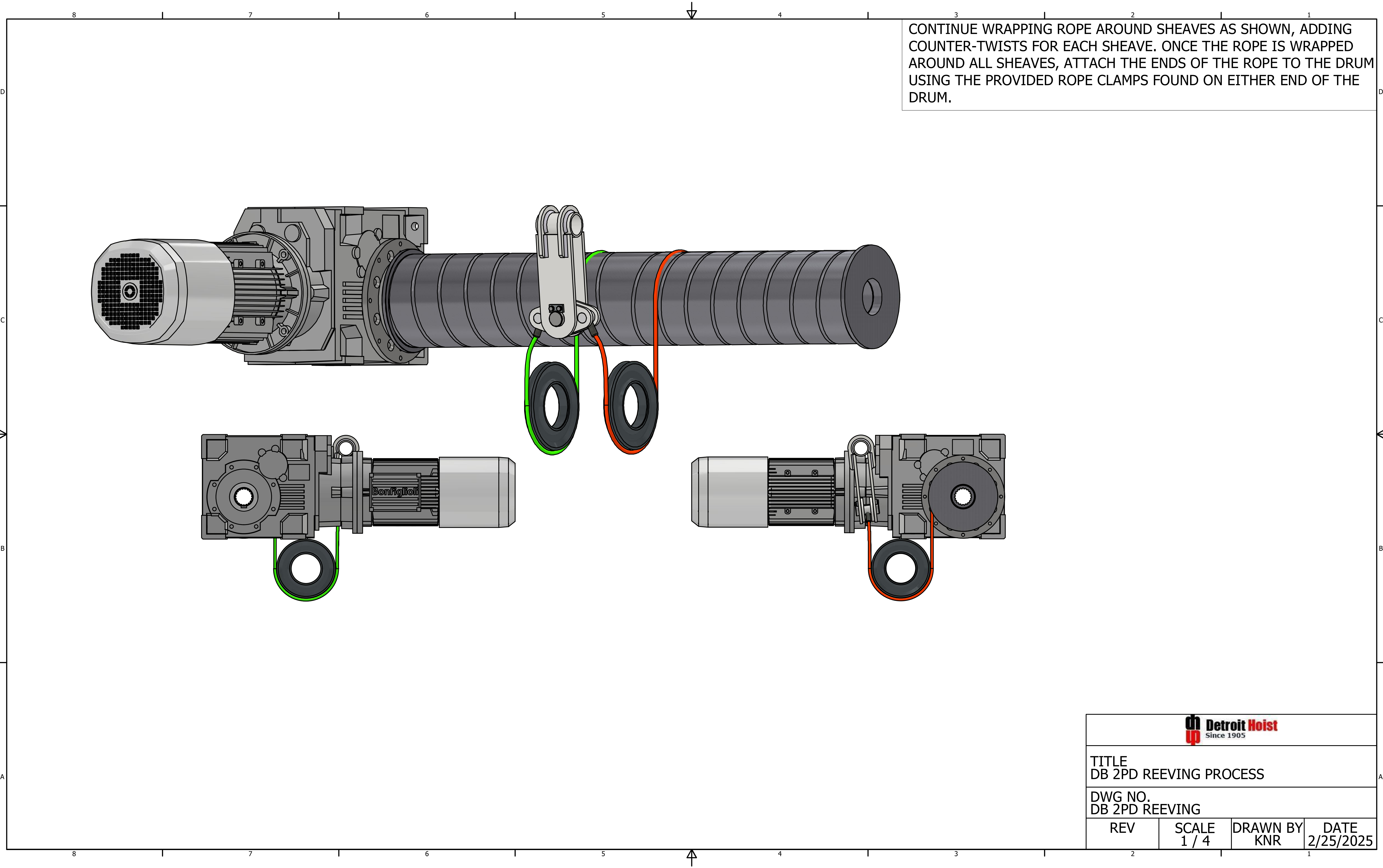
EX. RIGHT LAY ROPE:
TWIST AGAINST THE LAY TO RELIEVE TENSION



TITLE
DB 2PD REEVING PROCESS

DWG NO.
DB 2PD REEVING

REV	SCALE 1 / 4	DRAWN BY KNR	DATE 2/25/2025
-----	----------------	-----------------	-------------------



CONTINUE WRAPPING ROPE AROUND SHEAVES AS SHOWN, ADDING COUNTER-TWISTS FOR EACH SHEAVE. ONCE THE ROPE IS WRAPPED AROUND ALL SHEAVES, ATTACH THE ENDS OF THE ROPE TO THE DRUM USING THE PROVIDED ROPE CLAMPS FOUND ON EITHER END OF THE DRUM.



TITLE
DB 2PD REEVING PROCESS

DWG NO.
DB 2PD REEVING

REV

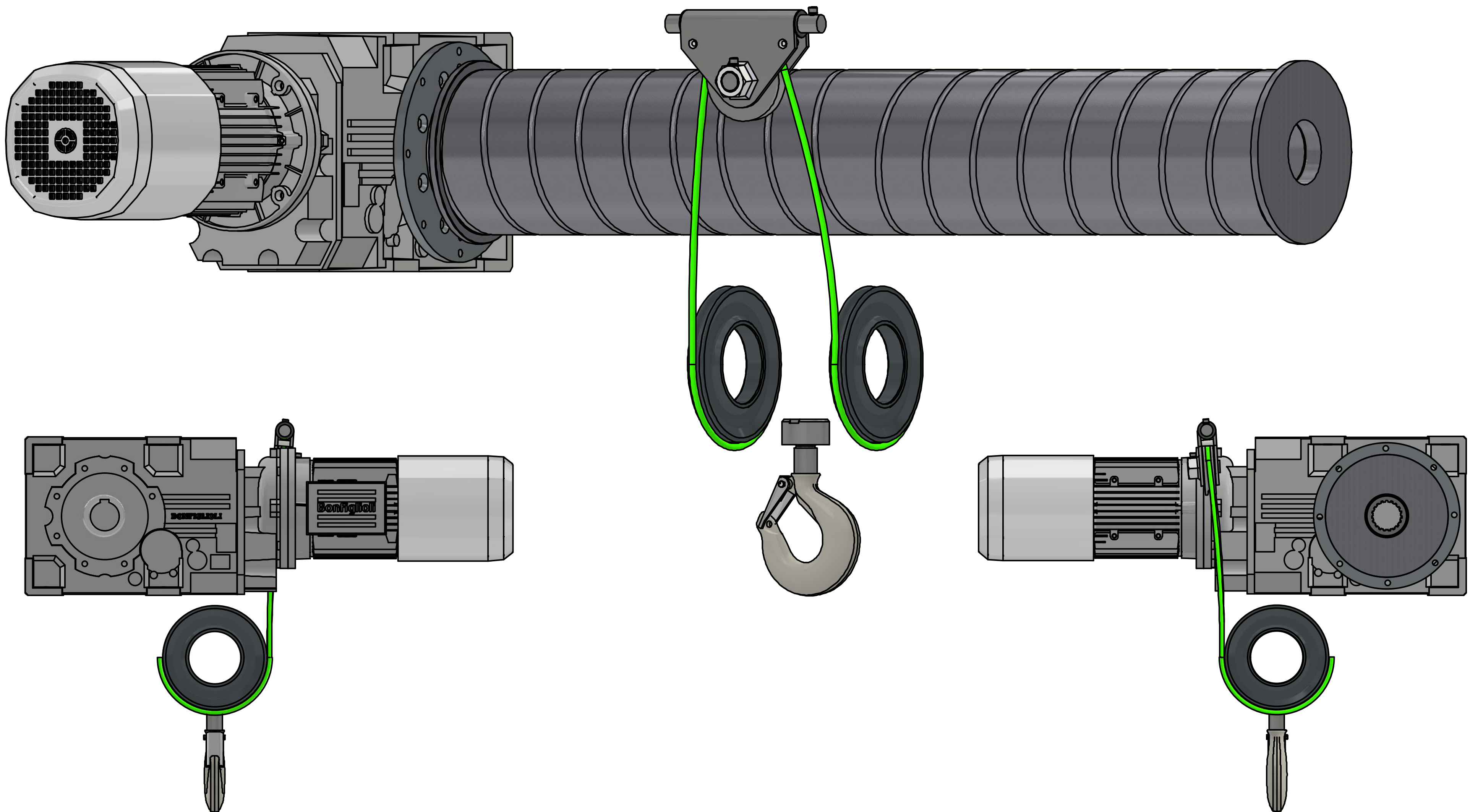
SCALE
1 / 4

DRAWN BY
KNR

DATE
2/25/2025

TO REEVE HOIST WITHOUT CAUSING TOO MUCH TENSION IN THE ROPE, START BY ROPEING THE EQUALIZER WELDMENT AS SHOWN. ADD 2 COUNTER-TWISTS TO THE ROPE EACH TIME IT WRAPS AROUND A SHEAVE. NOTE WHETHER YOU HAVE LEFT LAY OR RIGHT LAY WIRE ROPE. THE COUNTER-TWISTS WILL BE IN THE OPPOSITE DIRECTION OF THE LAY (LOOSEN THE ROPE COIL AROUND THE CORE).

EX. RIGHT LAY ROPE:
TWIST AGAINST THE LAY TO RELIEVE TENSION



TITLE
DB 2PS REEVING PROCESS

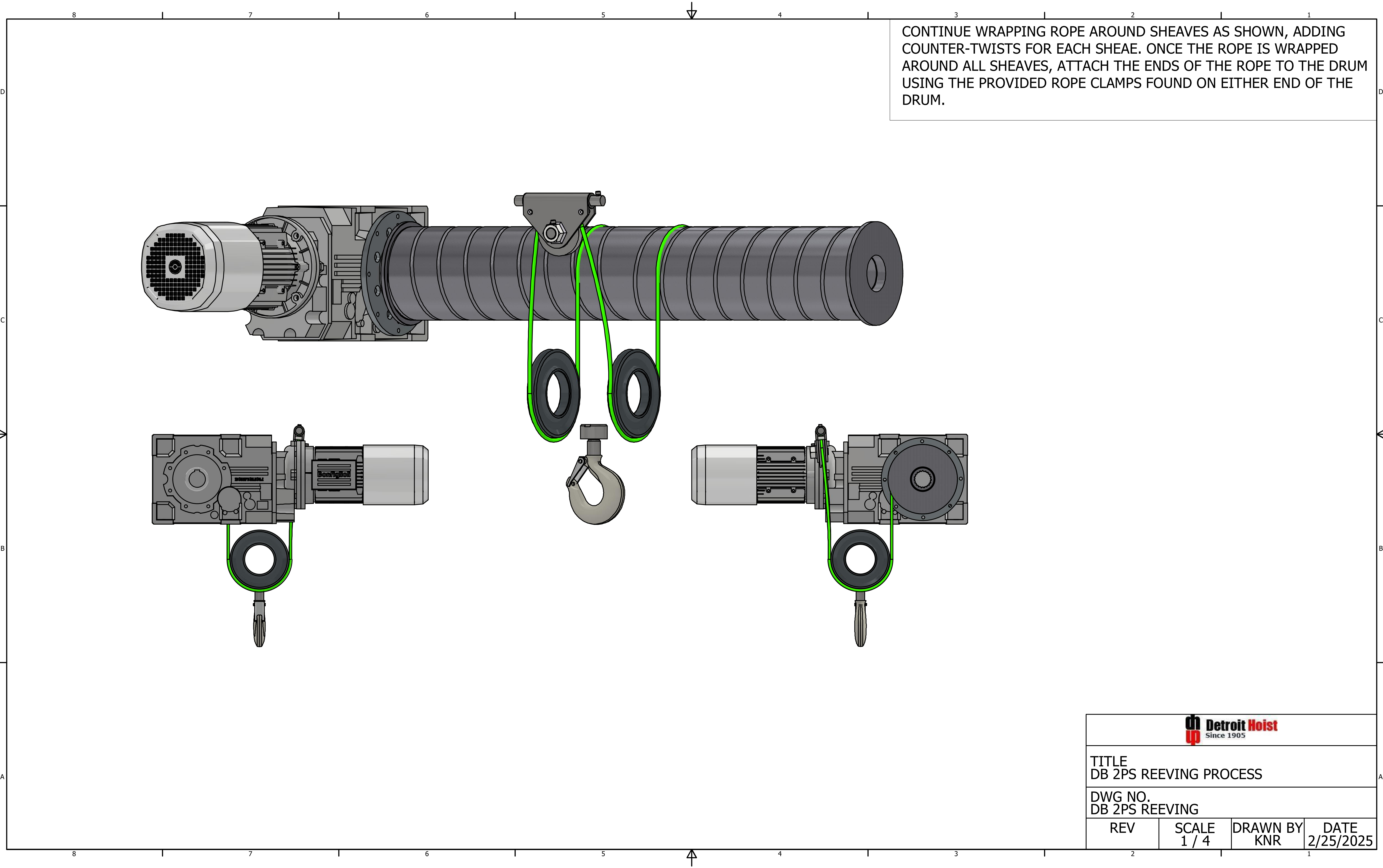
DWG NO.
DB 2PS REEVING

REV

SCALE
1 / 4

DRAWN BY
KNR

DATE
2/25/2025



CONTINUE WRAPPING ROPE AROUND SHEAVES AS SHOWN, ADDING COUNTER-TWISTS FOR EACH SHEAE. ONCE THE ROPE IS WRAPPED AROUND ALL SHEAVES, ATTACH THE ENDS OF THE ROPE TO THE DRUM USING THE PROVIDED ROPE CLAMPS FOUND ON EITHER END OF THE DRUM.



TITLE
DB 2PS REEVING PROCESS

DWG NO.
DB 2PS REEVING

REV	SCALE	DRAWN BY	DATE
	1 / 4	KNR	2/25/2025