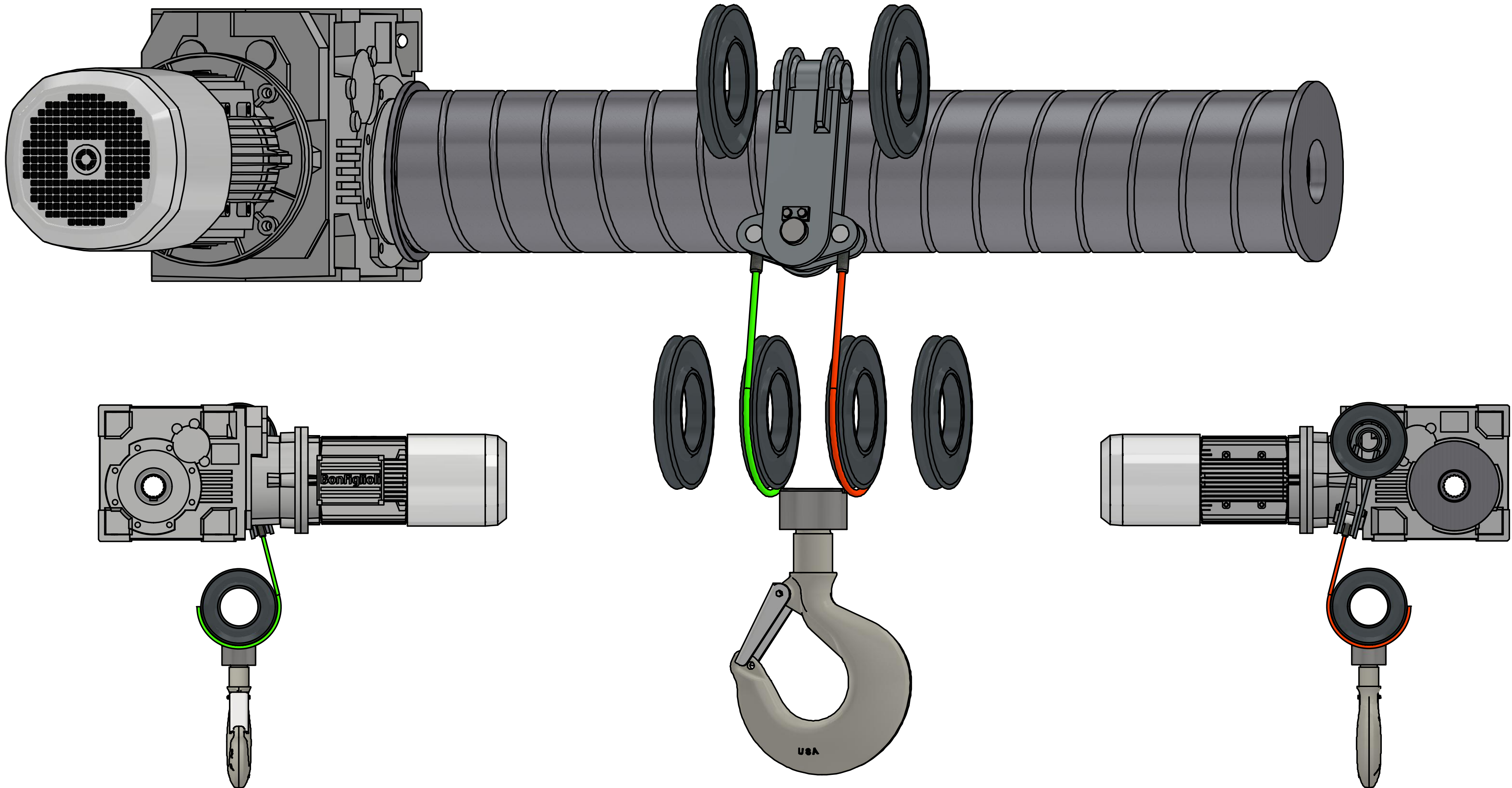


TO REEVE HOIST WITHOUT CAUSING TOO MUCH TENSION IN THE ROPE, START BY ROPING THE EQUALIZER WELDMENT AS SHOWN. ADD 2 COUNTER-TWISTS TO THE ROPE EACH TIME IT WRAPS AROUND A SHEAVE. NOTE WHETHER YOU HAVE LEFT LAY OR RIGHT LAY WIRE ROPE. THE COUNTER-TWISTS WILL BE IN THE OPPOSITE DIRECTION OF THE LAY (LOOSEN THE ROPE COIL AROUND THE CORE).

EX. RIGHT LAY ROPE
TWIST AGAINST THE LAY TO RELIEVE TENSION



TITLE
DB 4PD REEVING PROCEDURE

DWG NO.
DB 4PD REEVING

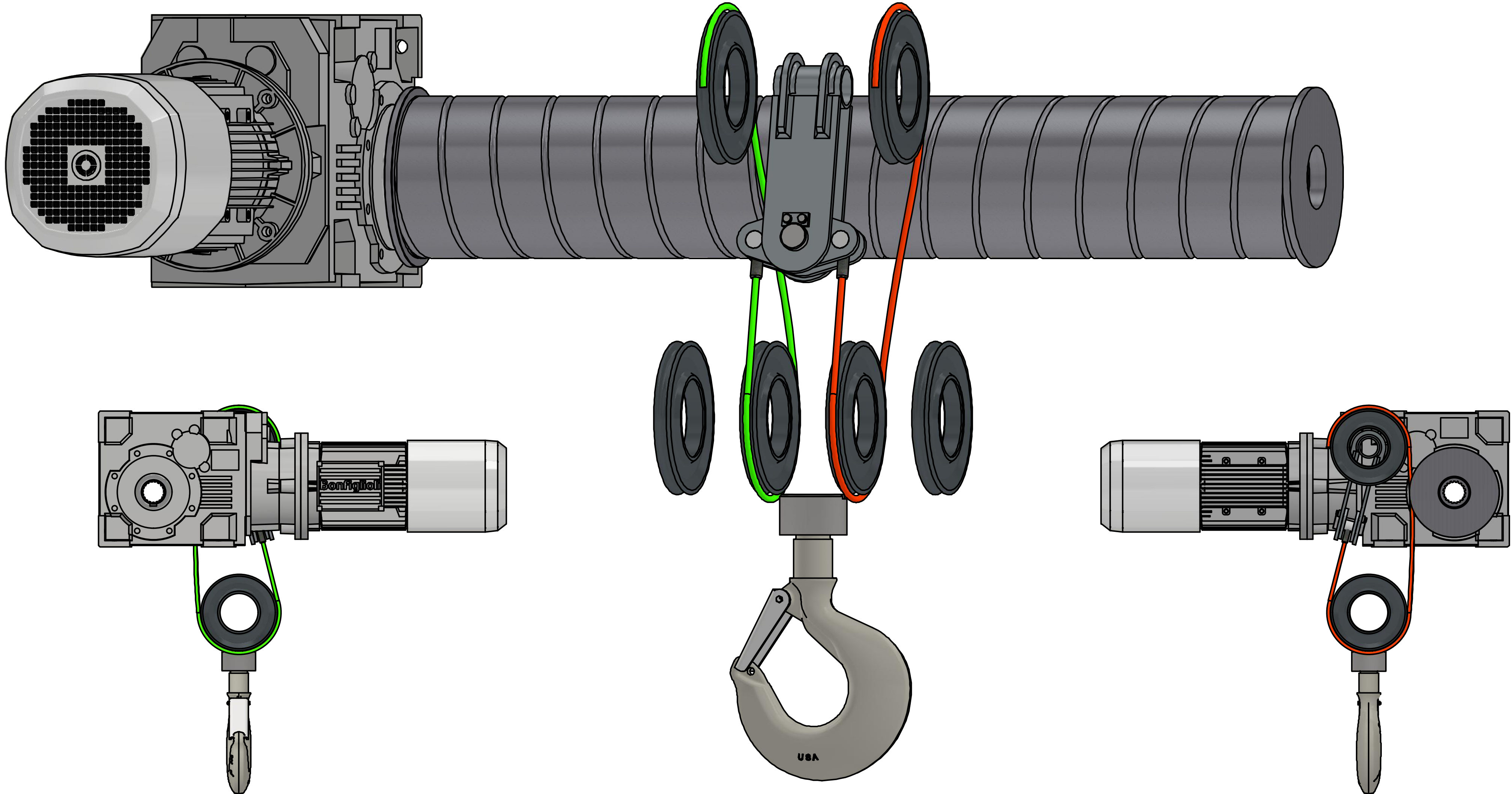
REV

SCALE
1 / 4

DRAWN BY
KNR

DATE
6/12/2025

CONTINUE WRAPPING ROPE AROUND SHEAVES AS SHOWN, ADDING COUNTER-TWISTS FOR EACH SHEAVE



TITLE
DB 4PD REEVING PROCEDURE

DWG NO.
DB 4PD REEVING

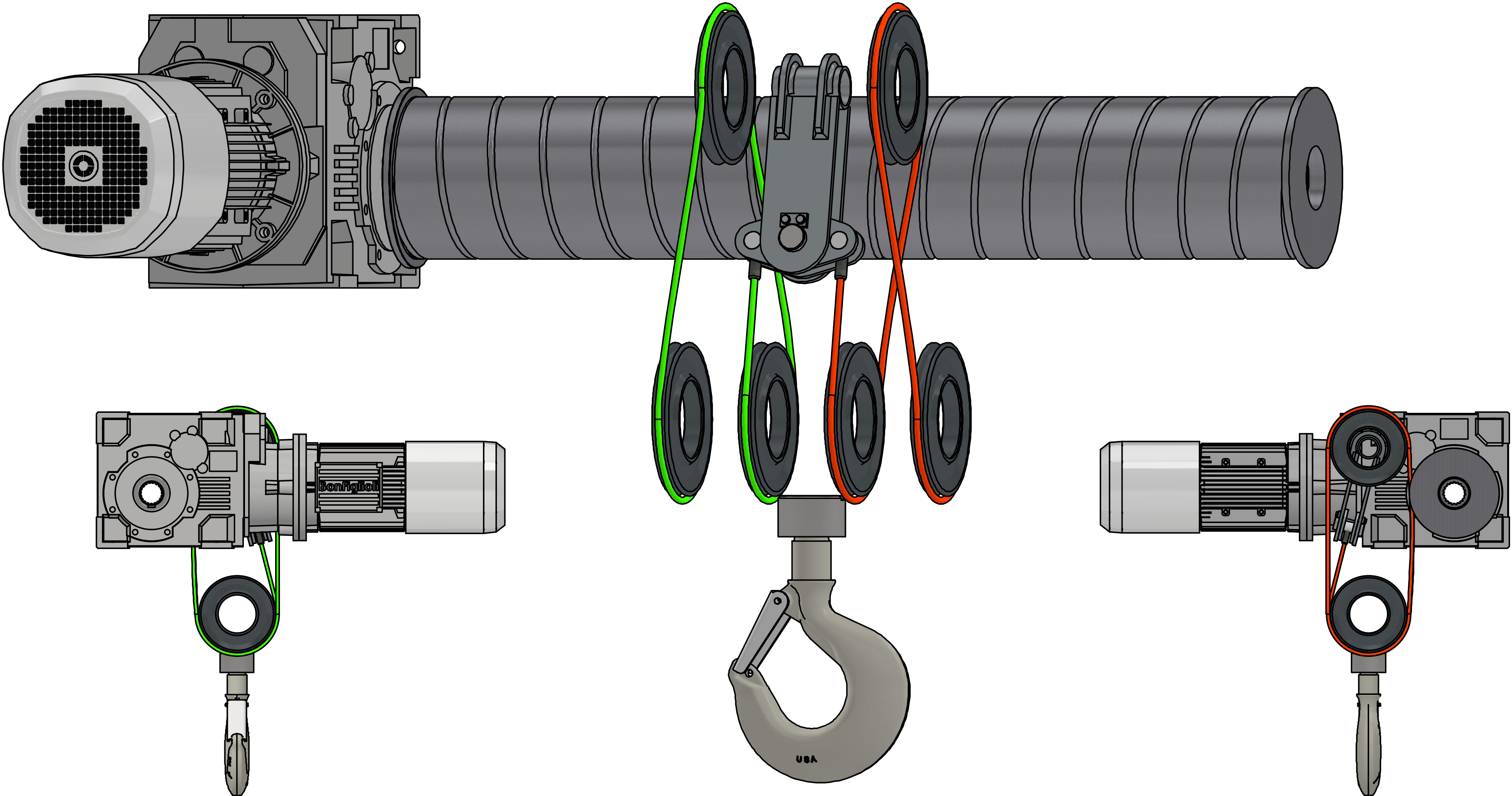
REV

SCALE
1 / 4

DRAWN BY
KNR

DATE
6/12/2025

CONTINUE WRAPPING ROPE AROUND SHEAVES AS SHOWN, ADDING COUNTER-TWISTS FOR EACH SHEAVE



TITLE
DB 4PD REEVING PROCEDURE

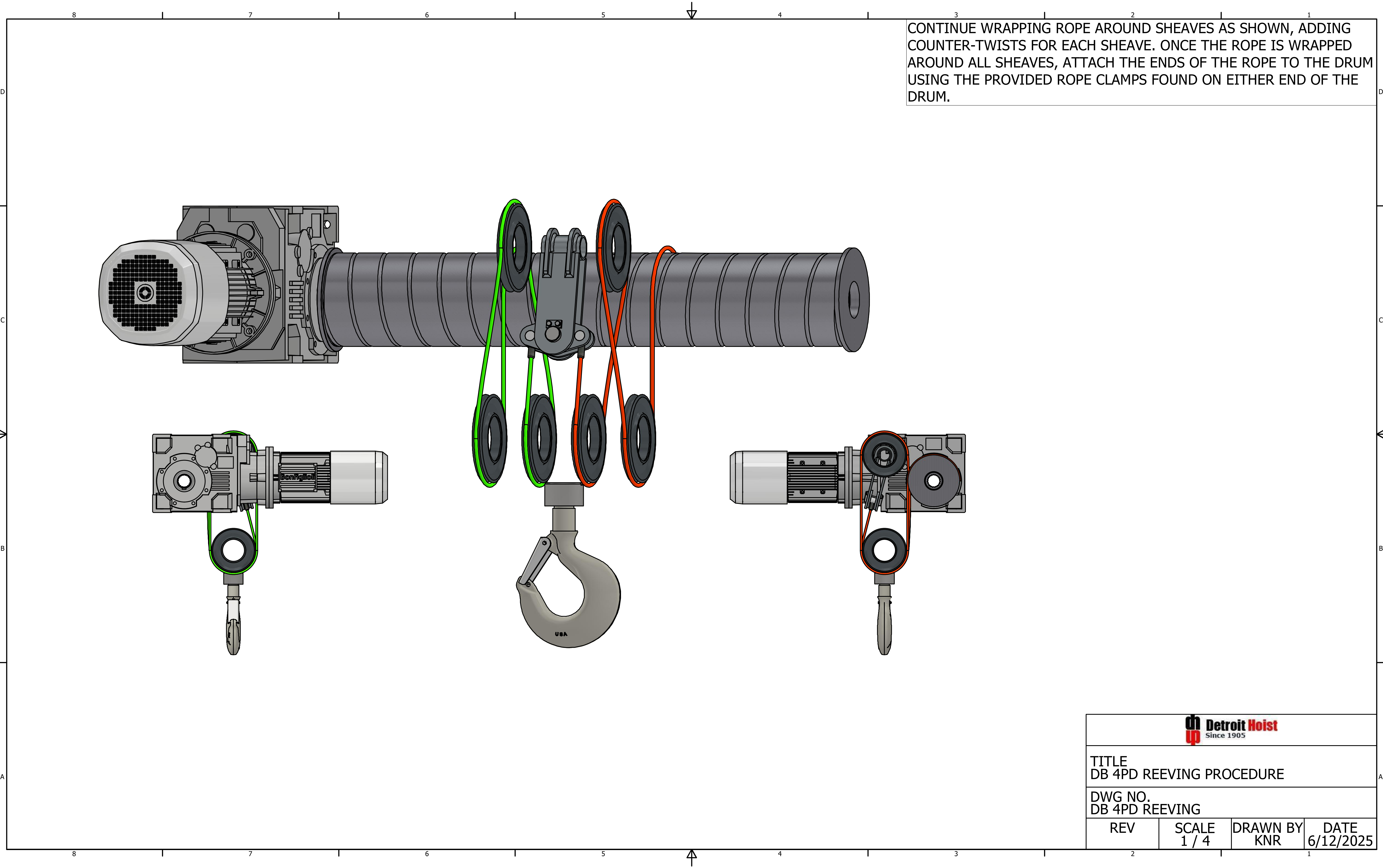
DWG NO.
DB 4PD REEVING

REV

SCALE
1 / 4

DRAWN BY
KNR

DATE
6/12/2025



CONTINUE WRAPPING ROPE AROUND SHEAVES AS SHOWN, ADDING COUNTER-TWISTS FOR EACH SHEAVE. ONCE THE ROPE IS WRAPPED AROUND ALL SHEAVES, ATTACH THE ENDS OF THE ROPE TO THE DRUM USING THE PROVIDED ROPE CLAMPS FOUND ON EITHER END OF THE DRUM.



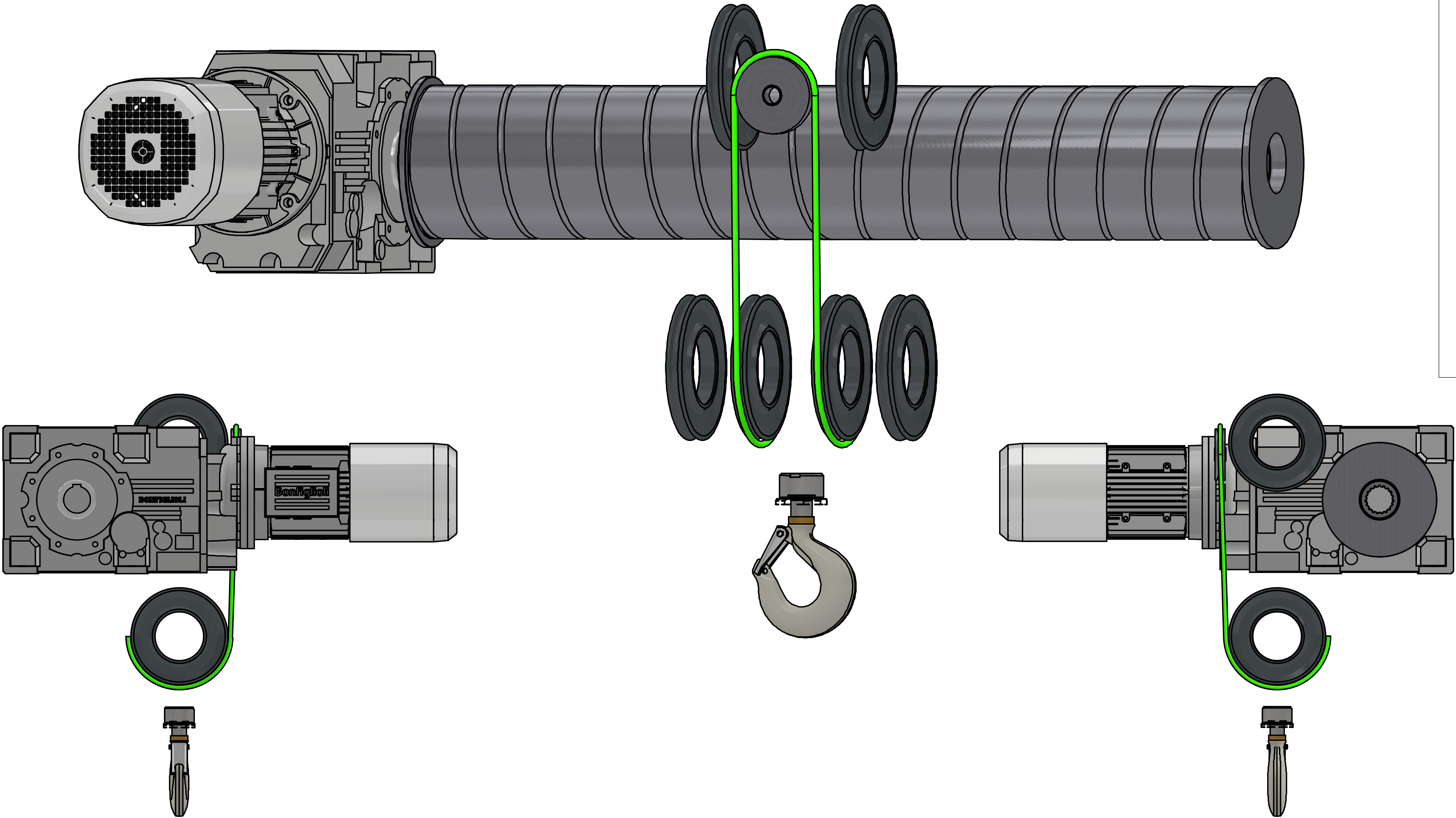
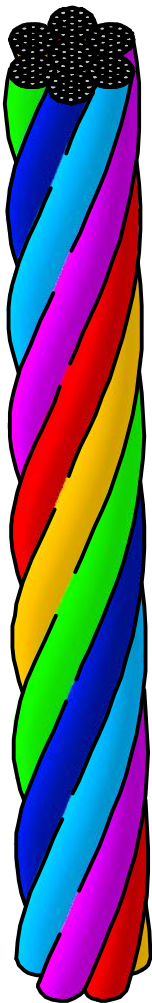
TITLE
DB 4PD REEVING PROCEDURE

DWG NO.
DB 4PD REEVING

| REV | SCALE | DRAWN BY | DATE |
|-----|-------|----------|-----------|
| | 1 / 4 | KNR | 6/12/2025 |

TO REEVE HOIST WITHOUT CAUSING TOO MUCH TENSION IN THE ROPE, START BY ROPING THE EQUALIZER SHEAVE AS SHOWN. ADD 2 COUNTER-TWISTS TO THE ROPE EACH TIME IT WRAPS AROUND A SHEAVE. NOTE WHETHER YOU HAVE LEFT LAY OR RIGHT LAY WIRE ORPE. THE COUNTER-TWISTS WILL BE IN THE OPPOSITE DIRECTION OF THE LAY (LOOSEN THE ROPE COIL AROUND THE CORE).

EX. RIGHT LAY ROPE:
TWIST AGAINST THE LAY TO RELIEVE TENSION



TITLE
DB 4PS REEVING PROCESS

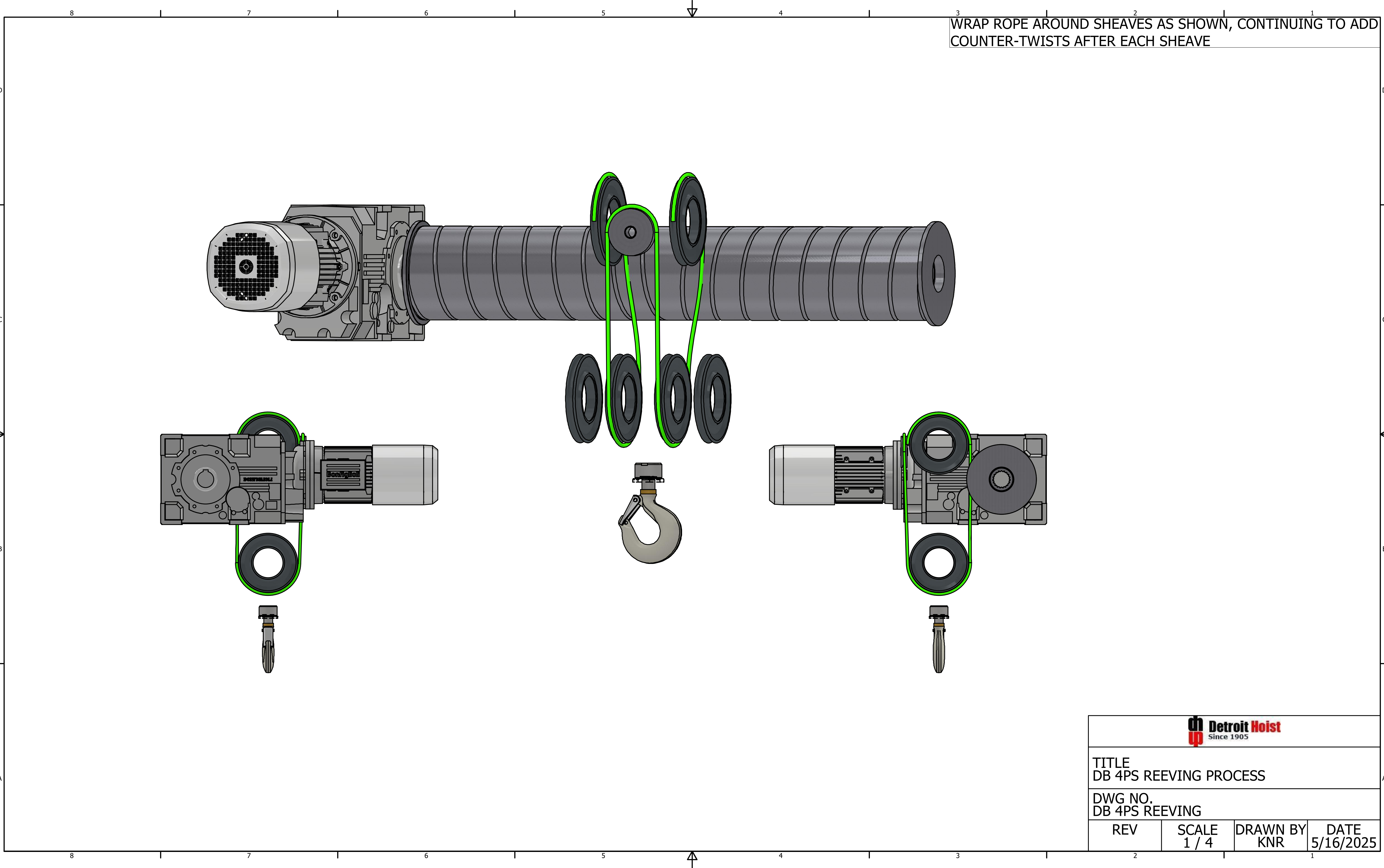
DWG NO.
DB 4PS REEVING

REV

SCALE
1 / 4

DRAWN BY
KNR

DATE
5/16/2025



WRAP ROPE AROUND SHEAVES AS SHOWN, CONTINUING TO ADD COUNTER-TWISTS AFTER EACH SHEAVE



TITLE
DB 4PS REEVING PROCESS

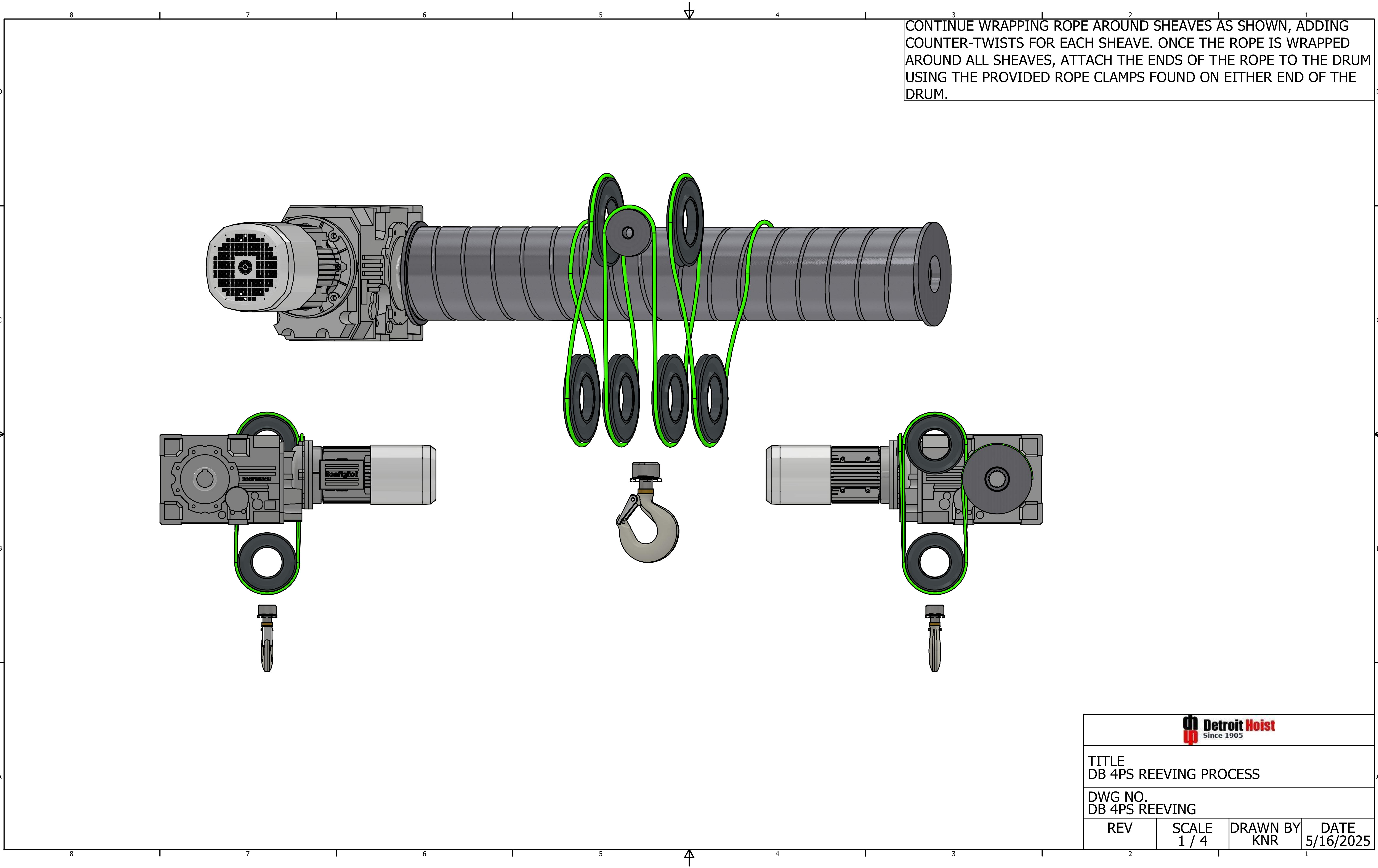
DWG NO.
DB 4PS REEVING

REV

SCALE
1 / 4

DRAWN BY
KNR

DATE
5/16/2025



CONTINUE WRAPPING ROPE AROUND SHEAVES AS SHOWN, ADDING COUNTER-TWISTS FOR EACH SHEAVE. ONCE THE ROPE IS WRAPPED AROUND ALL SHEAVES, ATTACH THE ENDS OF THE ROPE TO THE DRUM USING THE PROVIDED ROPE CLAMPS FOUND ON EITHER END OF THE DRUM.



TITLE
DB 4PS REEVING PROCESS

DWG NO.
DB 4PS REEVING

| REV | SCALE | DRAWN BY | DATE |
|-----|-------|----------|-----------|
| | 1 / 4 | KNR | 5/16/2025 |