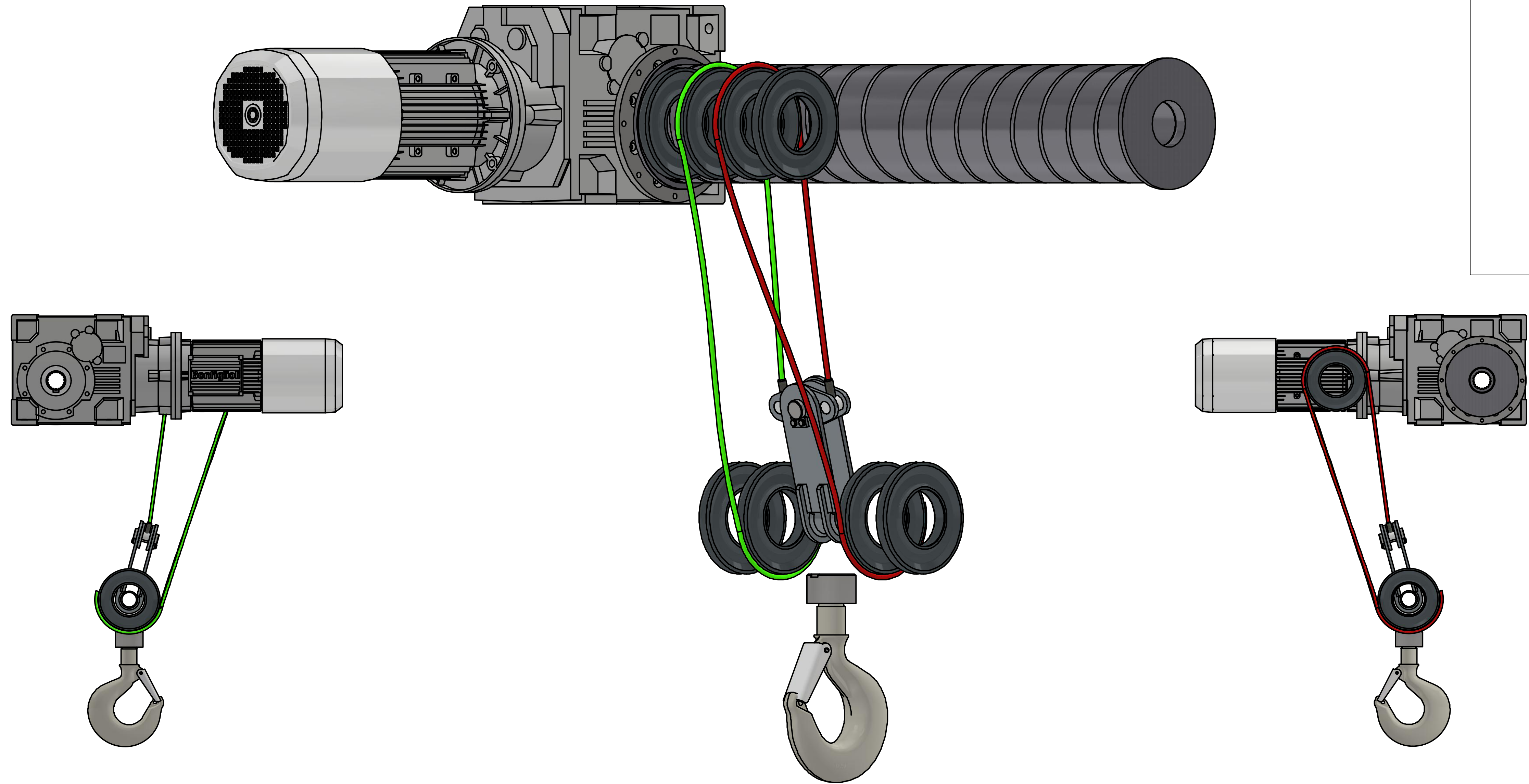


TO REEVE HOIST WITHOUT CAUSING TOO MUCH TENSION IN THE ROPE, START BY ROPING THE EQUALIZER WELDMENT AS SHOWN. ADD 2 COUNTER-TWISTS TO THE ROPE EACH TIME IT WRAPS AROUND A SHEAVE. NOTE WHETHER YOU HAVE LEFT LAY OR RIGHT LAY WIRE ROPE. THE COUNTER-TWISTS WILL BE IN THE OPPOSITE DIRECTION OF THE LAY (LOOSEN THE ROPE COIL AROUND THE CORE).

EX. RIGHT LAY ROPE:  
TWIST AGAINST THE LAY TO RELIEVE TENSION



TITLE  
DB 5PD REEVING PROCESS

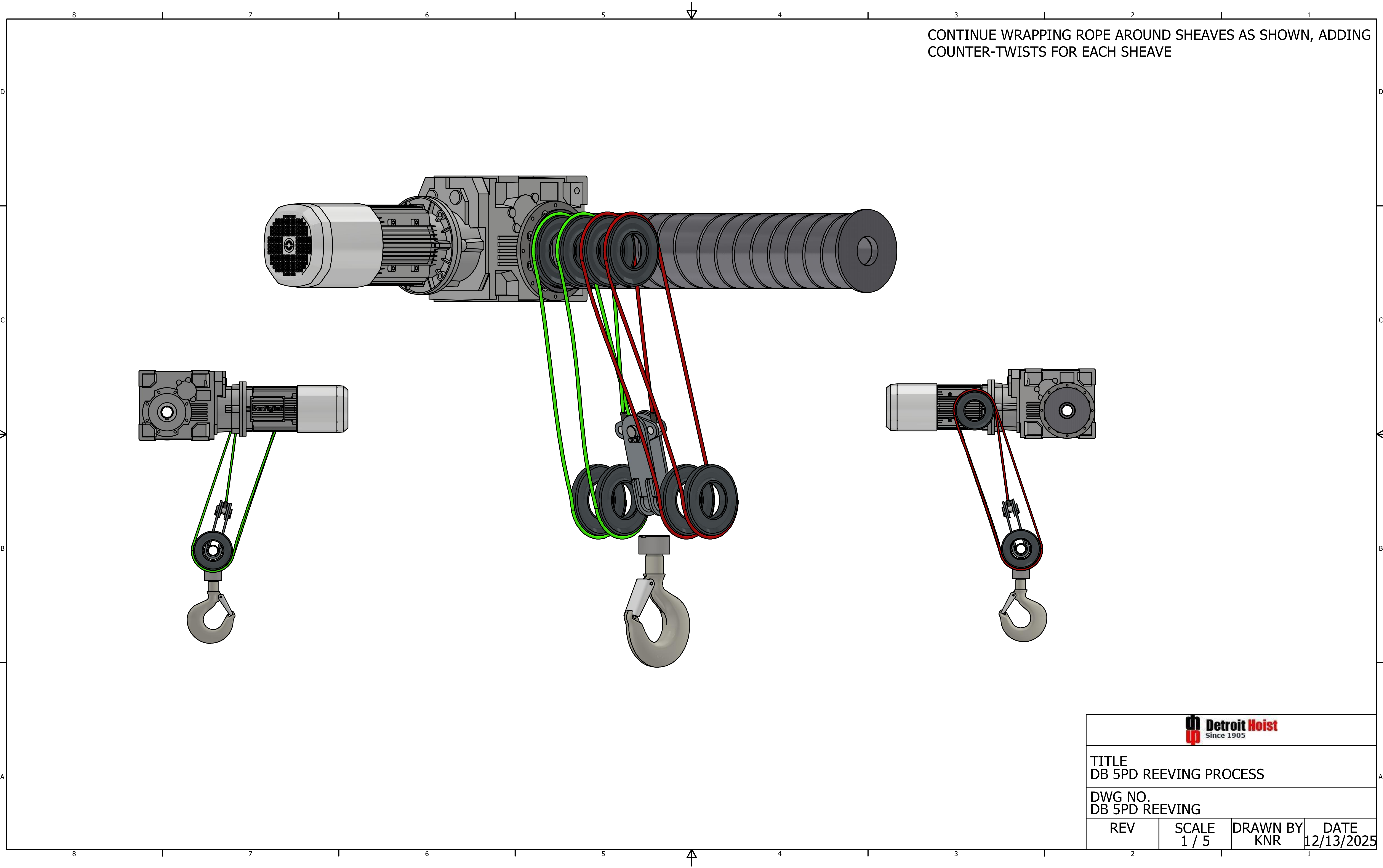
DWG NO.  
DB 5PD REEVING

REV

SCALE  
1 / 5

DRAWN BY  
KNR

DATE  
12/13/2025



CONTINUE WRAPPING ROPE AROUND SHEAVES AS SHOWN, ADDING COUNTER-TWISTS FOR EACH SHEAVE



TITLE  
DB 5PD REEVING PROCESS

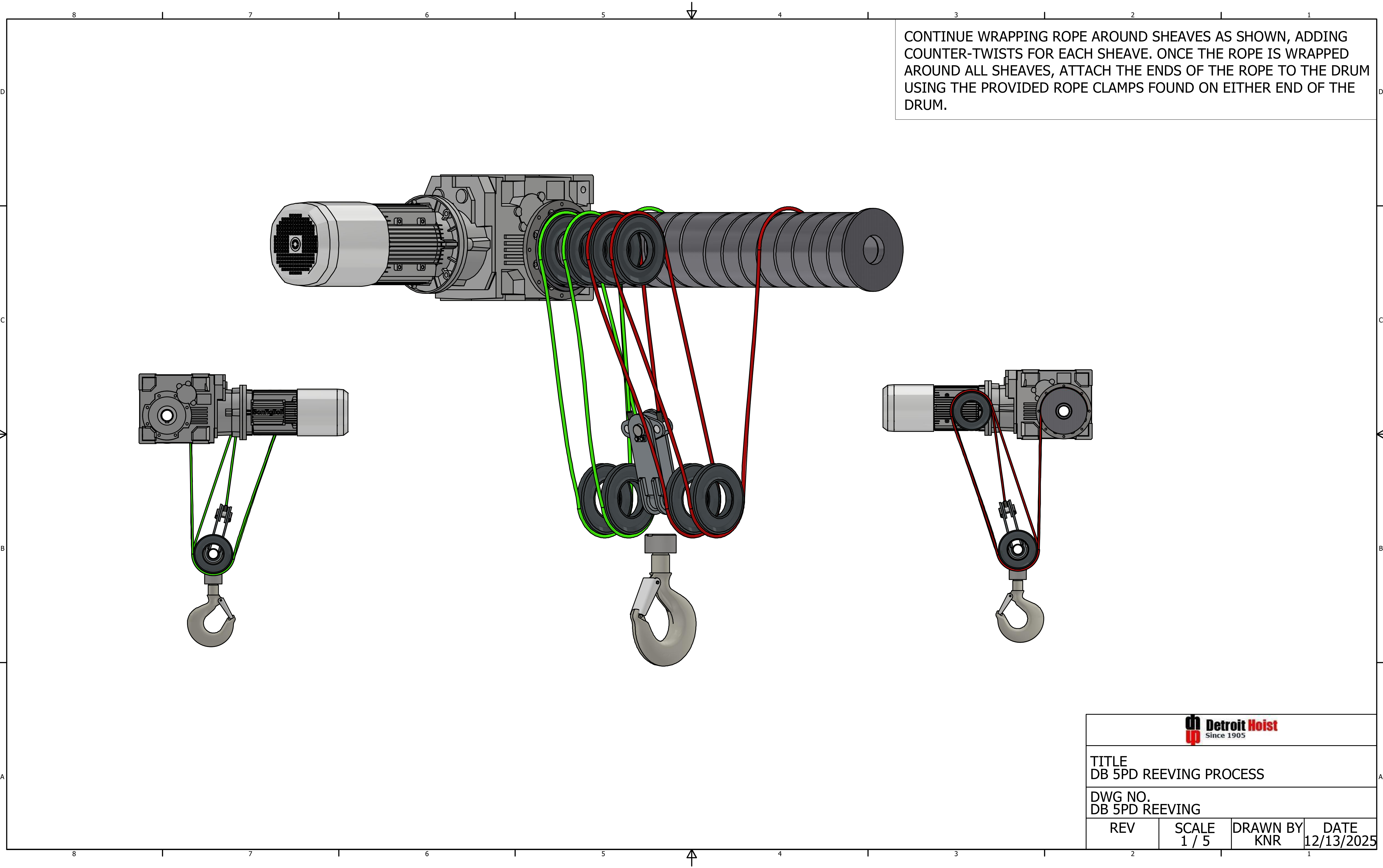
DWG NO.  
DB 5PD REEVING


REV

SCALE  
1 / 5

DRAWN BY  
KNR

DATE  
12/13/2025



			
TITLE DB 5PD REEVING PROCESS			
DWG NO. DB 5PD REEVING			
REV	SCALE 1 / 5	DRAWN BY KNR	DATE 12/13/2025